

PBS Works 13.2

Release Notes



 Altair | PBS Works™

PBS Works is a brand of  Altair

Intellectual Property Rights Notice: Copyrights, Trademarks, and Third Party Licenses

Updated: June 9, 2017.

Altair® PBS Works™ 13.2

Enabling On-Demand Computing™

Copyright© 1994-2017 Altair Engineering Inc. All Rights Reserved.

Special Notice: Pre-release versions of Altair software are provided 'as is', without warranty of any kind. Usage is strictly limited to non-production purposes.

Altair PBS Works™:

Compute Manager™ ©2012-2017; Display Manager™ ©2013-2017; PBS Pro™ ©1994-2017; PBS Professional® ©1994-2017; PBS Application Services™ ©2008-2017; PBS Analytics™ ©2008-2016; PBS Desktop™ ©2008-2012; and e-Compute™ ©2000-2010.

HyperWorks® Products:

HyperMesh® ©1990-2017; HyperCrash® ©2001-2017; OptiStruct® ©1996-2017; RADIOSS® ©1986-2017; HyperView® ©1999-2017; HyperView Player® ©2001-2017; HyperMath® ©2007-2017; HyperStudy® ©1999-2017; HyperGraph® ©1995-2017; MotionView® ©1993-2017; MotionSolve® ©2002-2017; HyperForm® ©1998-2017; HyperXtrude® ©1999-2017; Process Manager™ ©2003-2016; Templex™ ©1990-2017; TextView™ ©1996-2017; MediaView™ ©1999-2017; TableView™ ©2013-2017; BatchMesher™ ©2003-2017; HyperWeld® ©2009-2017; HyperMold® ©2009-2017; Manufacturing Solutions™ ©2005-2017; solidThinking Inspire® 2017 ©2009-2017; solidThinking Evolve®2017 ©1993-2017; Durability Director™ ©2009-2017; Suspension Director™ ©2009-2017; AcuSolve® ©1997-2017; AcuConsole® ©2006-2017; SimLab® ©2004-2017; Virtual Wind Tunnel™ ©2012-2017; FEKO® (©1999-2014 Altair Development S.A. (Pty) Ltd.; ©2014-2017 Altair Engineering, Inc.); ConnectMe™ ©2014-2017; Click2Extrude™ Polymer 2017 ©1996-2017; Click2Extrude™ Metal 2017 ©1996-2017; Click2Form™ 2017 ©1998-2017.

Additional Altair Products:

Multiscale Designer™ ©2011-2017;
 Flux v.12.2 ©1983-2017;
 InCa3D v.3.1©1996-2016;
 CDE v.2 ©2012-2016;
 Got-It v.3 ©2002-2016;
 WinProp v.14.5 ©2000-2017

Altair Packaged Solution Offerings (PSOs):

Automated Reporting Director™ ©2008-2017; GeoMechanics Director ©2011-2017; Impact Simulation Director™ ©2010-2017; Model Mesher Director™ ©2010-2017; Model Verification Director™ ©2013-2017; NVH Director™ ©2010-2017; Squeak and Rattle Director™ ©2012-2017; Virtual Gauge Director™ ©2012-2017; Weight Analytics™ ©2013-2017; Weld Certification Director™ ©2014-2017; Multi-Disciplinary Optimization™ ©2012-2017.

Altair Simulation Cloud Suite:

Simulation Manager™ ©2003-2016; Compute Manager™ ©2003-2017; Display Manager™ ©2003-2017; and Process Manager™ ©2003-2016.

Software products of solidThinking, Inc., a wholly owned subsidiary of Altair Engineering:

solidThinking Inspire® 2017 ©2009-2017; solidThinking Evolve®2017 ©1993-2017; solidThinking Compose® 2017 ©2007-2017, solidThinking Activate® 2017 ©1989-2017, solidThinking Embed® 2017 ©1989-2017, solidThinking Embed® SE 2017 ©1989-2017; Click2Extrude™ Metal 2017 ©1996-2017; Click2Extrude™ Polymer 2017 ©1996-2017; Click2Cast® 4.0 ©2011-2017; Click2Form™ 2017 ©1998-2017; Envision® 4.0 ©2013-2017.

Altair intellectual property rights are protected under U.S. and international laws and treaties. Additionally, Altair software is protected under patent #6,859,792 and other patents pending. All other marks are the property of their respective owners.

ALTAIR ENGINEERING INC. Proprietary and Confidential. Contains Trade Secret Information.

Not for use or disclosure outside of Altair and its licensed clients. Information contained in Altair software shall not be decompiled, disassembled, “unlocked”, reverse translated, reverse engineered, or publicly displayed or publicly performed in any manner. Usage of the software is only as explicitly permitted in the end user software license agreement. Copyright notice does not imply publication.

[Third party software licenses](#)

AcuConsole contains material licensed from Intelligent Light (www.ilight.com) and used by permission.

Software Security Measures:

Altair Engineering Inc. and its subsidiaries and affiliates reserve the right to embed software security mechanisms in the Software for the purpose of detecting the installation and/or use of illegal copies of the Software. The Software may collect and transmit non-proprietary data about those illegal copies. Data collected will not include any customer data created by or used in connection with the Software and will not be provided to any third party, except as may be required by law or legal process or to enforce our rights with respect to the use of any illegal copies of the Software. By using the Software, each user consents to such detection and collection of data, as well as its transmission and use if an illegal copy of the Software is detected. No steps may be taken to avoid or detect the purpose of any such security mechanisms.

Technical Support

Location	Telephone	e-mail
China	+86 (0)21 6117 1666	es@altair.com.cn
France	+33 (0)1 4133 0992	francesupport@altair.com
Germany	+49 (0)7031 6208 22	hwsupport@altair.de
India	+91 80 66 29 4500	pbs-support@india.altair.com
Italy	+39 800 905595	support@altairengineering.it
Japan	+81 3 5396 2881	pbs@altairjp.co.jp
Korea	+82 70 4050 9200	support@altair.co.kr
North America	+1 248 614 2425	pbssupport@altair.com
Scandinavia	+46 (0) 46 460 2828	support@altair.se
UK	+44 (0)1926 468 600	pbssupport@uk.altair.com

This document is proprietary information of Altair Engineering, Inc.

PBS Works Release Notes

These release notes describe the bug fixes and known issues for PBS Works 13.2. Please see the following sections for more information:

- [About PBS Works](#)
- [PBS Works Product Suite](#)
- [Supported Platforms](#)
- [Supported Browsers](#)
- [Upgrade, Compatibility and Installation Considerations](#)
- [Resolved Issues](#)
- [Known Issues](#)

About PBS Works

PBS Works™, Altair's suite of on-demand cloud computing technologies, allows enterprises to maximize Return On Investment (ROI) on existing infrastructure assets. PBS Works is the most widely implemented software environment for managing grid, cloud, and cluster computing resources worldwide. Compute Manager (CM), Display Manager (DM), Results Visualization Service (RVS) and Access Management Service (AMS) are available as part of the PBS Works Suite.

To obtain the latest release package, contact your Altair sales representative by writing to sales@altair.com or support@altair.com. For more information, visit us at www.pbsworks.com.

PBS Works Product Suite

The following applications are available in the PBS Works product suite:

- **Compute Manager:** A web-based portal for simplified job submission and management.
- **Display Manager:** A web-based portal for remote visualization and collaboration.
- **Results Visualization Service:** A service for visualizing plots and 3D animations using the HyperView Player browser plugin.
- **Access Management Service:** A service for defining users, groups, and access control policies.

Supported Platforms

PBS Works is supported on the following platforms:

Windows 64bit

- Windows Server 2008 R2
- Windows Server 2012
- Windows Server 2012 R2

Linux 64bit

- Red Hat Enterprise Linux (RHEL) 6 and 7
- CentOS 6 and 7
- SUSE Linux Enterprise Server (SLES) 11 and 12

Supported Browsers

PBS Works is supported on the following browsers:

- Google Chrome 57.x and later
- Firefox 52.x (32 bit) Extended Support Release (ESR) is supported. Please refer to <https://www.mozilla.org/en-US/firefox/organizations/>.
- Internet Explorer 11
- Safari 8.x and 9.x

The HyperView Player plugin is required for visualizing 3D animation. The Altair HyperView Player plugin used by RVS is available at the [download area](#) of PBS Works.

Certain functionalities of RVS and DM are available only when the Java Extensions are available on the client and/or web browser in use.

Download the latest JRE version from <https://java.com/en/download/>.

For information about installing Java, refer to http://www.java.com/en/download/help/download_options.xml.

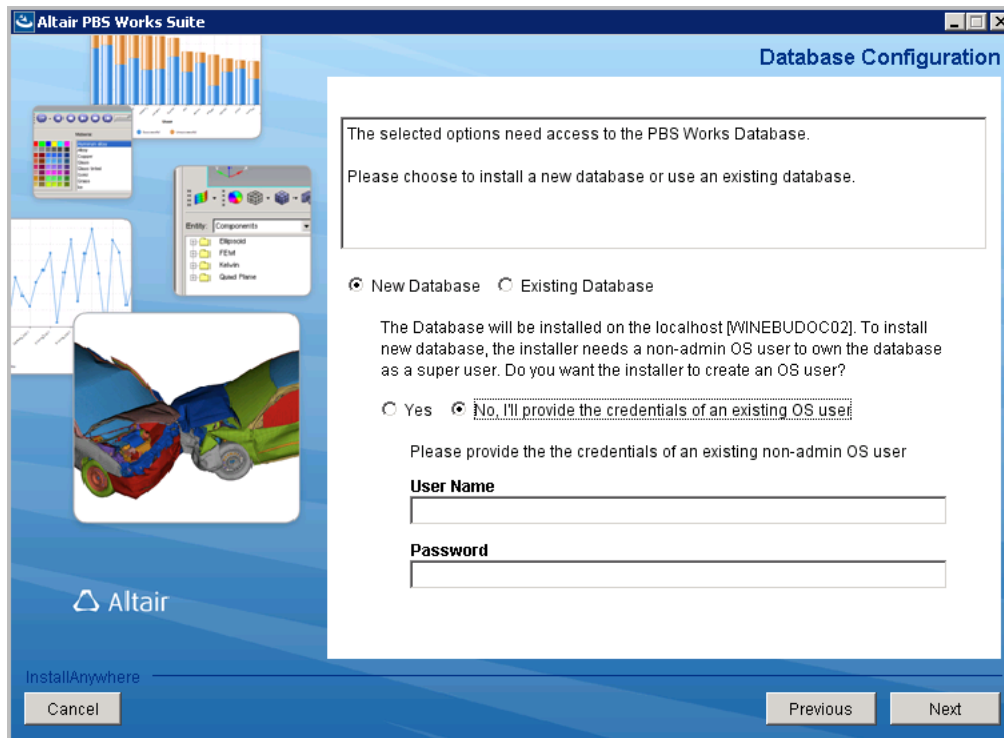
To enable Java, refer to http://www.java.com/en/download/help/enable_browser.xml.

For troubleshooting the Java installation, refer to http://www.java.com/en/download/help/troubleshoot_java.xml.

Upgrade, Compatibility and Installation Considerations

You must uninstall previous versions of PBS Works before attempting to install a new version. Please refer to the *PBS Works 13.2 Administrator's Guide* for information about installing PBS Works.

Please note, that during the installation of PBS Works two database options are available. You may choose to install a new database or point to an existing database. It is highly recommended to choose the new database instance.



For information about post-installation configuration steps for Compute Manager, Display Manager, and Results Visualization Service, see their respective Administrator's Guides.

Resolved Issues

The following sections provide information about issues that have been resolved with PBS Works 13.2:

- [Compute Manager](#)
- [Display Manager](#)
- [Results Visualization Service](#)
- [Access Management Service](#)

Compute Manager

This section provides information about issues that have been resolved in Compute Manager:

- [CM-3037 Filenames with Japanese or Chinese Characters are not Displayed Properly](#)
- [CM-3042 Solver Output File gets Corrupted during Download](#)
- [CM-3045 Non-US and Non-English Locale Settings causes a File Upload Issue in CM 13.1](#)
- [AWPF-1262 Platform Licensing Issue](#)
- [AWPF-1265 Invalid License Checkout Upon Login After Session Expiration](#)

CM-3037 Filenames with Japanese or Chinese Characters are not Displayed Properly

Summary: After downloading a file from CM, the filenames are not displayed properly if the filename contains Japanese or Chinese characters.

Resolution: The filename is now encoded to UTF-8 ISO-8859-1.

CM-3042 Solver Output File gets Corrupted during Download

Summary: Files containing a long sequence of 0x20 characters (ASCII space) get corrupted while being downloaded from CM 13.1.

Resolution: PAS was trimming the spaces as it was reading the data. The trimming logic has been eliminated.

CM-3045 Non-US and Non-English Locale Settings causes a File Upload Issue in CM 13.1

Summary: File upload process completes successfully and CM returns a failure message:

```
ERROR, 14 févr. 2017 00:31:57,275 -{RestFileUploadDownloadServices.java: 745} - error occurred java.lang.NumberFormatException: For input string: "0,68"
```

The failure appears independent of file size or type or format. Restarting CM or PAS does not fix this issue.

Resolution: This issue is fixed by setting up the locale environment and language to US and en respectively at the JVM level.

AWPF-1262 Platform Licensing Issue

Summary: The license server is pinged every 5 minutes, which is a configurable time interval. If AWPF cannot contact the license server, it continues to ping the license server. However, if after 18 minutes the license server is unresponsive, AWPF stops trying to contact the license server and users cannot login to PBS Works.

Resolution: Now, the PBS Works server rechecks the license server after 18 minutes, so that AWPF can reconnect to the license server and allows the user to login to PBS Works.

AWPF-1265 Invalid License Checkout Upon Login After Session Expiration

Summary: Licenses are checked out for Compute Manager and Display Manager when a user logs back in after a session is expired. Only a single license should be checked out in response to the user's login request.

Resolution: This issue is resolved by passing the application ID to the login service from where the user refreshes the page.

Display Manager

This section provides information about issues that have been resolved in Display Manager:

- [DM-840 HTML5 View gets Cropped in Firefox Browser](#)

DM-840 HTML5 View gets Cropped in Firefox Browser

Summary: HTML5 view gets cropped when enlarging the Firefox browser window.

Resolution: In DM 13.2, `displaygeo` and `resizedesktop` settings are removed from the `adminSettings.xml`. Now, the display resize happens automatically and the HTML5 view does not get cropped.

Results Visualization Service

This section provides information about issues that have been resolved in Results Visualization Service:

- [RVS-1020 RVS Auto Refresh Does Not Refresh the Data for Big Models as it Keeps on Displaying the Progress Dialog While Fetching Data from Server](#)

RVS-1020 RVS Auto Refresh Does Not Refresh the Data for Big Models as it Keeps on Displaying the Progress Dialog While Fetching Data from Server

Summary: Sometimes, the real time updates for plot and animation do not work as expected because the default refresh interval is too short for fetching the data from the server and refreshing the plot/animation.

Resolution: The auto refresh cycle is made sequential which increases the default refresh interval.

Access Management Service

This section provides information about issues that have been resolved in Access Management Service:

- [AMS-232 Login Popup is Displayed Repeatedly](#)
- [AMS-247 User can Login with Invalid Password](#)

AMS-232 Login Popup is Displayed Repeatedly

Summary: Authentication pop-up is displayed repeatedly while trying to login to PBS Works from a Firefox or Chrome browser.

Resolution: This occurs when SSO is enabled, but the browser is not configured for SSO. This has been corrected by making a change to the Kerberos configuration file.

For more information on SSO configuration, see the Enabling Single Sign-On section in the *PBS Works 13.2 Administrator's Guide*.

AMS-247 User can Login with Invalid Password

Summary: After a valid login and logout process, a user is able to login with an invalid password within the configured cache time.

Resolution: The cache implementation is updated to validate the credentials.

Known Issues

This section provides information about known issues with PBS Works 13.2:

- [Compute Manager](#)
- [Display Manager](#)
- [Results Visualization Service](#)

Compute Manager

This section provides information about known issues with Compute Manager:

- [CM-1580 Non-required Arguments are Displayed when “Required” is Selected](#)
- [CM-2828 Files in the Job Submission Page are not Updated after Job Submission](#)
- [CM-2878 Manage Column Drop Down List is Hidden behind Job Listing panel](#)
- [CM-2882 More Action Button is Disabled after Exporting Jobs](#)
- [CM-2897 Local Dynamic Application does not work in IE 11 Browser](#)
- [CM-2906 Configuration Files are not Getting Updated when SSO is Disabled](#)
- [CM-2948 Columns Added to the Job Listing Panel do not get Exported](#)
- [CM-2953 Sorting is not Working in Job Monitoring Page](#)
- [CM-2980 Job Files are not Displayed when Job has more than 500 Files](#)
- [CM-3001 User's Password Containing the Special Character “€” cannot Log In](#)
- [CM-3005 Command to start/stop PBS Works do not Return Successful Messages](#)
- [CM-3008 Application Reference Exists in Home Folder after Uninstallation](#)
- [CM-3013 Cannot Submit a Job when Input File Pathname contains a “+”](#)
- [CM-3065 When a Copy of a Directory is Deleted, Creating a New Copy does not Work](#)
- [CM-3067 CM Policies are getting Deleted](#)
- [CM-3068 Folder names with Japanese and Chinese Characters are not Displayed Properly](#)
- [AWPF-1253 Notifications Count is Incremented after Disabling the Notifications](#)

CM-1580 Non-required Arguments are Displayed when “Required” is Selected

Summary: When the Java applet based uploader is in use, then non-required job arguments are showing up even if “**Required**” is selected. This occurs when the local dynamic application feature is enabled in the CM Settings and is associated with Java Applet related bugs.

Work Around: No workaround for this issue.

CM-2828 Files in the Job Submission Page are not Updated after Job Submission

Summary: The **Files** panel in the **Job Submission** page does not get updated after the job is submitted or completed until the **Refresh** button is clicked in the **Files** panel.

Work Around: No workaround for this issue.

CM-2878 Manage Column Drop Down List is Hidden behind Job Listing panel

Summary: When the **Job ID** and the **State** columns are displayed in the **Job Monitoring** page job list, the **Manage Column** drop down box is hidden behind the **Job Listing** panel. As a result, other columns cannot be added to the job list from the **Manage Columns** drop down list.

Work Around: Resize the **Job ID** and the **State** columns in the **Job Monitoring** page to view the **Manage Column** drop down list.

CM-2882 More Action Button is Disabled after Exporting Jobs

Summary: The **More Action** button gets disabled after exporting jobs.

Work Around: Refresh the page to enable the **More Actions** button.

CM-2897 Local Dynamic Application does not work in IE 11 Browser

Summary: Local dynamic application do not work in IE11 browser, due to Java applet limitation.

Work Around: No workaround for this issue.

CM-2906 Configuration Files are not Getting Updated when SSO is Disabled

Summary: Configuration files are not getting updated, when SSO is disabled on windows after service restart.

Work Around: After disabling SSO on windows, perform the following steps:

1. At the Windows command line prompt, navigate to `SERVER_HOME\scripts`
2. Enter `PBSWorksService remove`
3. Enter `PBSWorksService install`
4. Enter `PBSWorksService.bat start`

CM-2948 Columns Added to the Job Listing Panel do not get Exported

Summary: Columns that are added to the **Job Listing** panel do not get exported to the CSV files either from the **Export Selected Jobs** or from the **Export All Jobs** options.

Work Around: No workaround for this issue.

CM-2953 Sorting is not Working in Job Monitoring Page

Summary: Sorting is not working for the **State** column in the **Job Monitoring** page

Work Around: No workaround for this issue.

CM-2980 Job Files are not Displayed when Job has more than 500 Files

Summary: Using Firefox, job files are not getting displayed when there are more than 500 files for the job. The browser does not respond when you select the job.

Work Around: No workaround for this issue.

CM-3001 User's Password Containing the Special Character "€" cannot Log In

Summary: User's having a password containing the special character "€" cannot log in.

Work Around: Change the password of the user so that it does not contain the special character "€".

CM-3005 Command to start/stop PBS Works do not Return Successful Messages

Summary: On RHEL7 and CENTOS7 platforms, the following commands work correctly, but do not return any successful messages.

```
/etc/init.d/ start/stop/restart command
```

The following warning message is displayed when you execute the above command:

```
[root@VM13-VM1 ~]# /etc/init.d/pbsworks stop
Stopping pbsworks (via systemctl): Warning: pbsworks.service changed on disk. Run
'systemctl daemon-reload' to reload units.
[ OK ]

[root@VM13-VM1 ~]# /etc/init.d/pbsworks start
Starting pbsworks (via systemctl): Warning: pbsworks.service changed on disk. Run
'systemctl daemon-reload' to reload units.
```

Work Around: If you get a warning message as mentioned above after using the `/etc/init.d/ start/stop/restart` command, then use the command `systemctl daemon-reload`

CM-3008 Application Reference Exists in Home Folder after Uninstallation

Summary: The links to the application on the PBS Works login page do not work. A blank web page is displayed.

While uninstalling PBS Works, the user can choose to delete the PBS Works Home directory. If this directory is not removed, then upon installing PBS Works again, there may be references to applications in the HOME directory that were not installed during the second installation.

Work Around: No workaround for this issue.

CM-3013 Cannot Submit a Job when Input File Pathname contains a “+”

Summary: A job cannot be submitted when an input file's path contains a “+”. The filename is highlighted in red on the job submission form.

Work Around: No workaround for this issue.

CM-3065 When a Copy of a Directory is Deleted, Creating a New Copy does not Work

Summary: This issue is observed while performing the following steps:

1. Create a copy of a directory.
2. Delete the copied directory.
3. Using the context menu, attempt to copy the directory a second time.
CM does not create a copy of the directory.

Work Around: No workaround for this issue.

CM-3067 CM Policies are getting Deleted

Summary: The policies which are set for non-interactive applications in Compute Manager are getting deleted when a users switches from CM to DM.

Work Around: No workaround for this issue.

CM-3068 Folder names with Japanese and Chinese Characters are not Displayed Properly

Summary: After downloading a folder from CM, the folder names are not getting displayed or the folder is getting corrupted if the folder name contains Japanese or Chinese characters.

Work Around: No workaround for this issue.

AWPF-1253 Notifications Count is Incremented after Disabling the Notifications

Summary: After disabling Notifications, the user is alerted about new Notifications. The number next to the notification icon is incremented when new notifications are generated and the filtering is not applied for the notification count.

Work Around: No workaround for this issue.

Display Manager

This section provides information about known issues with Display Manager:

- [DM-296: Tooltips Issue in Chrome](#)
- [DM-752 DM applications did not Work](#)
- [DM-763 Edited Session Name is not Displayed when Connected from CM](#)
- [DM-786 The Application is not Displayed Properly in the Session Area](#)
- [DM-826 Application Components are Hidden Behind the Notification Panel](#)
- [DM-848 Applications are not Displayed due to Change in Admin Password](#)

DM-296: Tooltips Issue in Chrome

Summary: In Google Chrome, tooltips for the **Settings** menu, **Application Context** menu, and **Session Delete** gets hidden behind the application viewer.

Work Around: In DM 13.1, HTML5 view mode is supported for VNC and RDP for remote desktop. Choosing this view mode for the application will prevent this issue.

DM-752 DM applications did not Work

Summary: DM<13.1 does not work with PBS Pro >= 13.0 when execjob_launch hook is in use.

Resolution: No workaround for this issue.

DM-763 Edited Session Name is not Displayed when Connected from CM

Summary: When you edit the session name in DM and then connect the session through CM, then the edited session name is not displayed. The session changes back to the application name.

The edited session name remains changed when you log out and log in through DM.

Work Around: No workaround for this issue.

DM-786 The Application is not Displayed Properly in the Session Area

Summary: When a session is started in Firefox, the application gets displayed only at the top of the session area and the remaining area is rendered black.

Work Around: The application is rendered correctly once you refresh or resize the browser.

DM-826 Application Components are Hidden Behind the Notification Panel

Summary: When the **Notification** panel is opened, then the application component's Session area is hidden behind it.

Work Around: No workaround for this issue.

DM-848 Applications are not Displayed due to Change in Admin Password

Summary: If the admin password for any one of the registered PAS servers is changed or expired, then none of the applications are listed in DM.

The following error is displayed due to this issue:

```
com.altair.gw.aif.exceptions.NotAuthorizedException: java.util.concurrent.Execution-  
Exception: javax.security.auth.login.FailedLoginException: Authentication failed:  
javax.security.auth.login.LoginException: Authentication Failed: SSH connect failed:  
com.jcraft.jsch.JSchException: Packet corrupt
```

Work Around: The Admin password has to be corrected for the registered PAS server.

Results Visualization Service

This section provides information about known issues with Results Visualization Service:

- [RVS-264 Series of Result Files \(Radios and Ls-Dyna\) are Not Displayed on Windows Server](#)
- [RVS-323 Animation Data Cannot be Extracted from a H3D File When it Contains Results from Multibody and Flex Simulations](#)
- [RVS-330 Cannot Display Animation Results in a 64-Bit Browser on a 64-Bit Linux Operating System](#)

RVS-264 Series of Result Files (Radios and Ls-Dyna) are Not Displayed on Windows Server

Summary: On Windows Server, the series of result files such as Radios A00* and Ls-Dyna d3 plot* are not displayed correctly if the result directories are not directly accessible as a mapped drive.

Work Around: The result directories need to be mapped to the Result Visualization Server.

RVS-323 Animation Data Cannot be Extracted from a H3D File When it Contains Results from Multibody and Flex Simulations

Summary: The H3D output from MBD, Flex and *.MAF are not supported for extracting animation.

Work Around: There is no work around at this time.

RVS-330 Cannot Display Animation Results in a 64-Bit Browser on a 64-Bit Linux Operating System

Summary: The required plug-in to visualize the animation data is not available for a 64-bit browser on a Linux platform.

Work Around: Use a 32-bit browser version to view the animation data on a 64-bit Linux client.

